

# D<sup>PAW</sup>GOTEKA

Phytopharmacy for dogs and cats.

A DIFFERENT APPROACH TO  
**DOG AND CAT WELLBEING**



[www.dogoteka.shop](http://www.dogoteka.shop)

A COMPLETE SYSTEM TO SUPPORT DOGS AND CATS  
AT EVERY STAGE OF LIFE AND FOR EVERY PHYSIOLOGICAL NEED

Comprehensive support at every stage of life

**GROWTH & DEVELOPMENT**

Support throughout all stages of a puppy's growth for harmonious development.

---

**JOINTS & MOBILITY**

Support for joint function and movement.

---

**PAIN MANAGEMENT**

Natural support during moments of discomfort.

---

**SENIOR ANIMALS**

Comprehensive support in later life stages.

---

**INTESTINAL BALANCE**

The foundation of health: digestion, absorption, and immune defenses start here.

---

**INTESTINAL INFECTIONS**

Support in critical moments of intestinal infections.

---

**ENERGY, SPORT & RECOVERY**

For active, sporting, and working dogs.

---

**IMMUNE SYSTEM**

Support for natural defenses.

---

**FERTILITY & REPRODUCTION**

Preparation and support throughout reproductive phases.

---

**PSEUDOPREGNANCY & END OF LACTATION**

Management of changes related to pseudopregnancy and support in restoring physiological balance after lactation.

---



**BREEDING & EARLY MONTHS**

From birth, through weaning, to the early stages of growth.

---

**SKIN & COAT**

Support for dermal function and overall skin health.

---

**URINARY TRACT**

Support for normal urinary function.

---

**ORAL HYGIENE**

Daily prevention and maintenance of oral health.

---

**ANXIETY & STRESS**

Support during periods of stress, agitation, and change.

---

**HYDRATION & FLUID BALANCE**

When normal water intake is not sufficient.  
Fast and safe electrolyte rebalancing.

---

**EYE CARE**

Support and cleansing of the periocular area.

---

**EXTERNAL PROTECTION & CARE**

Hygiene, protection, and maintenance of the skin.

---

**DAILY FUNCTIONAL NUTRITION**

The foundation for any type of diet.

---



HEALTH ISN'T A SINGLE INTERVENTION.  
IT'S A **BALANCE** THAT'S BUILT OVER TIME.

**DOGOTEKA**

Today, our pets eat better.  
But are they really doing better?

More and more often we see:

- **INTESTINAL SENSITIVITIES**
- **SKIN ISSUES**
- **JOINT PROBLEMS**
- **DROPS IN ENERGY**
- **AGE-RELATED DISORDERS**

---

BECAUSE EVEN WITH GOOD NUTRITION, THE BODY CAN  
LOSE ITS BALANCE. WHEN THIS HAPPENS, THE  
PROBLEM IS NEVER JUST ONE.

---


Not to add something extra

---

But to work on the whole system

DOGOTEKA STARTS HERE

An approach based on targeted formulations, designed to  
work in synergy and support the body on multiple levels.



BECAUSE MAINTAINING BALANCE IS ALWAYS  
MORE EFFECTIVE THAN HAVING TO RESTORE IT.



BEFORE: puppy with growth problems

NOT A SINGLE INTERVENTION  
 SYNERGY MAKES THE DIFFERENCE



AFTER: three weeks of integration with DogoJunior and MultiAdapt

NOT A PRODUCT

a

VISION

a

METHOD

A comprehensive approach, not a single intervention. Results come from synergy. That's why Dogoteka has developed a precise method. Dogoteka is not based on the use of a single product, but on an approach built on the synergy between multiple formulations. A product can help.

SYNERGY DELIVERS A MORE COMPLETE RESULT

## HOW THE METHOD WORKS

The body is a system. That's why our approach follows a precise logic:

- REBALANCE → STARTING FROM THE GUT
- SUPPORT → WITH TARGETED NUTRITIONAL SUPPORT
- INTERVENE → ON THE SPECIFIC NEED WITH THE APPROPRIATE SOLUTION

### A SYSTEMIC APPROACH

Dogoteka formulations work on multiple levels:

- GUT
- METABOLISM
- IMMUNE DEFENSES
- SPECIFIC FUNCTION

They do not act in isolation, but in a coordinated way.



A PUPPY'S GROWTH HAPPENS ONLY ONCE. MAKE IT COUNT.

During growth, the puppy builds everything: bones, muscles, joints, immune system... and gut microbiota.

IT'S NOT JUST GROWING  
IT'S BUILDING THE ADULT IT WILL BECOME



- + A high-intensity biological phase
- + A puppy's metabolism operates at an extraordinary speed.

Every day:

- new tissues are produced
- the immune system develops
- intestinal balance is established

This is a phase with extremely high metabolic demand.

FEEDING ALONE IS NOT ENOUGH. THE  
DEVELOPING BODY NEEDS TARGETED SUPPORT.

DOGO JUNIOR®

- SUPPORTS OSTEO-ARTICULAR DEVELOPMENT
- STRUCTURAL FOUNDATION OF GROWTH



The heart of growth

A PUPPY IS A SYSTEM UNDER CONSTRUCTION  
SUPPORTING JUST ONE ASPECT IS NOT ENOUGH.

Multiple levels must be addressed simultaneously



## THE GUT IS THE STARTING POINT

In puppies, the digestive system is still developing.

From here depend:

- nutrient absorption
- immune development
- metabolic balance

SYNERGISTIC USE

### LACTOADAPT®

→ SUPPORTS THE GUT MICROBIOTA

A stable gut means stronger, more reliable growth.



## THE CORE OF GROWTH: STRUCTURE + METABOLISM

Building a puppy properly means working on multiple levels at the same time.

### MULTIADAPT®

Essential synergy

→ SUPPORTS METABOLISM, IMMUNE FUNCTION, AND ADAPTIVE CAPACITY

DOGOJUNIOR® + MULTIADAPT®

work together for balanced and solid development



### DOGO DIGESTIVE®

Complementary support

→ DIGESTIVE SUPPORT AND NUTRIENT ABSORPTION

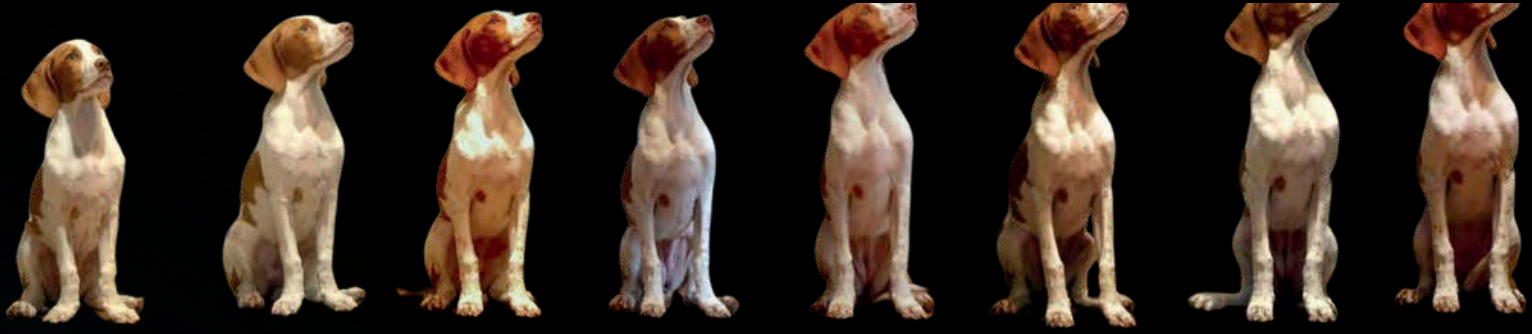


### DOGO OMEGA PLUS®

Complementary support

→ SYSTEMIC SUPPORT AND DEVELOPMENT





YOU ONLY HAVE **ONE CHANCE** TO **RAISE** YOUR **PUPPY** WELL. MAKE IT COUNT.  
Healthy growth can not be corrected later. It must be built from the start.



---

MOVEMENT IS LIFE.  
PROTECTING IT MEANS PRESERVING HEALTH.

---

Joints are fundamental to the quality of life of dogs and cats.

An animal that moves well is more active, balanced, and healthy.

When movement decreases, other issues related to inactivity and overall wellbeing can develop over time.

---

### NOT ONLY WHEN PROBLEMS ARISE

---

Joint support is important also from a preventive perspective:

- growth (especially in large-breed dogs)
- physical activity
- joint stress
- predisposed subjects
- long-term maintenance

+ Over time, joint metabolism may undergo degenerative processes, such as osteoarthritis.

+ Early intervention and ongoing support help maintain mobility and function for longer.



---

TARGETED FORMULATIONS FOR EVERY NEED

---



INDICATIONS FOR USE

- support of joint metabolism in cases of **osteoarthritis**
- contribution to **tendon** and **ligament** wellbeing
- support of natural physiological responses to **joint stress**
- maintenance of **elasticity** in the tendon–muscle system
- lameness and **panosteitis**, within a targeted nutritional support plan
- in cases of **ligament laxity**



GARCINIA MANGOSTANA

MOVEMENT IS NOT JUST ACTIVITY.  
IT'S QUALITY OF LIFE.

DOGOMINI ®

→ for small-breed dogs and cats

DOGOMAXY ®

→ for large-breed dogs



## AN ADVANCED APPROACH TO PAIN

Pain does not depend only on the initial cause. Over time, it also involves inflammation and the nervous system. That's why acting on a single front is often not enough.

## AN INTEGRATED APPROACH THAT GOES BEYOND A SINGLE INGREDIENT

### DOGODOL®

Complementary feed for dogs and cats, formulated to support pain and inflammatory processes, also acting at the level of the nervous system.

At the core of the formula is PEA, a physiological substance involved in modulating the inflammatory response and pain mechanisms, especially in chronic conditions.

#### When to use it

- chronic pain
- osteoarticular conditions
- functional recovery
- senior animals, where pain is often multifactorial

Comprehensive support can make a real difference in quality of life.



**DOGODOL®** combines selected components designed to work in a complementary way:

- support for the physiological inflammatory response
- support for the nervous system
- protection against oxidative stress



**DON'T ACT ON JUST ONE POINT.  
ACT ON THE WHOLE SYSTEM.**

## DON'T LET AGE SLOW DOWN YOUR BEST FRIEND

As the years pass, the body of dogs and cats changes. Systems become less efficient and more sensitive to imbalances.

IT'S NOT JUST ABOUT AGE. IT'S A PHASE THAT REQUIRES A DIFFERENT APPROACH.

### What happens with aging

In senior animals, we often observe:

- less efficient digestion
- alterations in the gut microbiota
- reduced immune defenses
- decreased energy levels
- increased oxidative stress
- joint stiffness and reduced mobility

These changes are not isolated, but interconnected.



## DOGO SENIOR®

### A SYSTEMIC APPROACH

In senior dogs and cats, the focus is not on a single issue, but on the body's overall balance.

That's why support must be:

- ✓ continuous
- ✓ targeted
- ✓ integrated

COMPREHENSIVE SUPPORT TO  
ACCOMPANY THE BODY IN LATER LIFE

GANODERMA LUCIDUM  
(REISHI)



SYNERGISTIC USE

### MULTIADAPT®

→ IMMUNE AND ENERGY SUPPORT



### LACTOADAPT®

→ GUT BALANCE AND MICROBIOTA



### DOGO OMEGA PLUS®

→ METABOLIC SUPPORT AND INFLAMMATORY RESPONSE



### DOGO MAXY®

→ JOINT SUPPORT AND MOBILITY



## WHY INTERVENTION MAKES A DIFFERENCE

With age, the body loses its ability to adapt.

SUPPORTING IT MEANS:

- maintaining energy and vitality
- preserving mobility
- improving quality of life
- supporting aging in a balanced way

AGE CHANGES THE BODY.  
HOW YOU SUPPORT IT MAKES THE DIFFERENCE.



THE FOUNDATION OF HEALTH STARTS HERE.

WHEN TO INTERVENE

- daily maintenance
- dietary changes
- stress
- digestive sensitivities
- stool alterations

THE GUT IS NOT JUST ABOUT DIGESTION.

IT IS THE CENTER OF:

- nutrient absorption
- microbiota balance
- immune system

NOT A PRODUCT. A COMPLETE MANAGEMENT APPROACH.

AND DURING ACUTE PHASES, WHEN BALANCE IS DISRUPTED.

When the gut functions well, the entire body benefits.

LACTOADAPT®

- SUPPORTS THE GUT MICROBIOTA
- PROMOTES DIGESTIVE BALANCE AND STABILITY



Daily balance

DOGO DIGESTIVE®

- DIRECT DIGESTIVE SUPPORT
- USEFUL FOR MORE SENSITIVE SUBJECTS



MANGO, MAGNOLIA

ACUTE INTESTINAL PHASES

When a sudden disorder appears (e.g. diarrhea), the gut quickly falls out of balance.

LACTOADAPT STOP®

→ TARGETED SUPPORT DURING ACUTE PHASES

→ HELPS STABILIZE THE SITUATION QUICKLY



Acute intestinal phases

Also ideal for difficult subjects (e.g. cats) due to ease of use.

AFTER THE ACUTE PHASE

An acute phase does not end when the symptom disappears.

It often leaves a condition of intestinal dysbiosis.

For this reason, it is essential to continue with:

LACTOADAPT®

→ TO RESTORE MICROBIOTA BALANCE



THE BODY'S BALANCE STARTS HERE.

## WHEN TARGETED INTERVENTION IS NEEDED

Some intestinal conditions require specific support. Particularly in intestinal infestations (e.g. Giardia), gut balance becomes compromised.

WHEN THIS BALANCE IS ALTERED, THE ENVIRONMENT BECOMES FAVORABLE FOR PROLIFERATION.

## DIAGIAR®

### WHAT HAPPENS IN THE GUT:

Giardia develops in the intestine, interacting with:

- microbiota
- intestinal mucosa
- immune system

### TARGETED SUPPORT ON THE INTESTINAL ENVIRONMENT

## DIAGIAR®

→ helps create an intestinal environment unfavorable to cyst proliferation

→ it acts on the "terrain" where the problem develops

In managing intestinal infections, it is essential to work on multiple levels:

## MULTIADAPT®

→ IMMUNE SYSTEM SUPPORT



## LACTOADAPT®

→ SUPPORT FOR MICROBIOTA AND MUCOSA



mint, pumpkin seeds

## SYNERGISTIC USE

SYNERGY IS THE KEY

Giardia is an opportunistic organism:

- it develops more easily when intestinal balance is already compromised.

This means that when it is present, the microbiota and intestinal mucosa are already altered.

For this reason, acting on a single front is not enough.

It is necessary to:

- create an unfavorable environment
- restore the intestinal barrier
- support the body's defenses



lavender, garlic, tea tree

DOGOTEKA INTESTINAL INFECTIONS

SYNERGY IS THE KEY. FOR AN EFFECTIVE LONG-TERM SOLUTION.

DIAGIAR®

→ TARGETED SUPPORT FOR THE INTESTINAL ENVIRONMENT

LACTOADAPT STOP®

→ PROMOTES DIGESTIVE BALANCE AND STABILITY

LACTOADAPT®

→ SUPPORT OF THE MICROBIOTA AND MUCOSA



## AN ACTIVE DOG IS A DOG THAT EXPENDS MORE

A sporting, working, or simply active dog is not a "normal" dog.

It is an organism that works harder.

And as such, it needs proper support.

### THE THREE CHALLENGES OF THE ACTIVE DOG

Every physical activity involves:

- increased energy expenditure
- increased oxidative stress
- loss of fluids and electrolytes

If these aspects are not properly supported, the body becomes fatigued and recovery slows down.



maca, alfalfa

**IF THESE ASPECTS ARE NOT PROPERLY SUPPORTED,  
THE BODY BECOMES FATIGUED AND RECOVERY BECOMES SLOWER.**

## CELERVIS PET®

**NOT JUST FEEDING. SUPPORTING METABOLISM.**

### ENERGY

- supports energy metabolism
- helps sustain effort and improve recovery

Ideal for:

- sporting activity
- working dogs
- debilitated or recovering subjects



**AN ACTIVE DOG SHOULD NOT JUST BE FED.  
IT SHOULD BE SUPPORTED.**

ADAPTATION & OXIDATIVE STRESS

SYNERGISTIC USE

**MULTIADAPT®**

- SUPPORT DURING PERIODS OF PHYSICAL AND METABOLIC STRESS
- HELPS THE BODY ADAPT TO EXERTION
- ESSENTIAL FOR ACTIVE AND SPORTING DOGS



HYDRATION & ELECTROLYTES

**DOGOREHYDRO®**

- RESTORES FLUIDS AND ELECTROLYTES
- SUPPORT DURING AND AFTER EXERTION
- WHEN DRINKING ALONE IS NOT ENOUGH



METABOLIC SUPPORT & INFLAMMATION

**DOG OMEGA PLUS®**

- SUPPORTS CELL MEMBRANES
- PROMOTES EFFICIENT METABOLIC EXCHANGE
- CONTRIBUTES TO MODULATION OF THE INFLAMMATORY RESPONSE
- ESSENTIAL TO SUSTAIN PERFORMANCE AND RECOVERY



NOT JUST FOR SPORT

This approach is also useful for:

- show dogs
- hunting and working dogs
- recovering subjects
- pregnant or lactating females
- weak puppies

For optimal support of the active dog:

- energy
- adaptation
- recovery
- hydration
- metabolic balance

These work together, not separately.



NOT JUST DEFENSE. IT'S BALANCE.

A DIFFERENT APPROACH TO IMMUNE SUPPORT.

The immune system is not an isolated system.

It is a complex network that must:

- recognize
- respond
- adapt

Supporting the immune system does not simply mean "stimulating" it. It means helping it function properly and in balance.

WHEN THIS BALANCE IS DISRUPTED,  
THE BODY MAY BECOME MORE  
VULNERABLE OR REACT EXCESSIVELY

## MULTIADAPT®

NOT JUST A MULTIVITAMIN



MULTIADAPT® is an advanced phytonutritional formulation designed to support the body's adaptive capacity.

ASTRAGALUS, ROSEHIP, ECHINACEA

- + It doesn't just provide nutrients.
- + It works on the body's response.

### WHAT MAKES IT DIFFERENT

Its action is based on a combination of:

- adaptogenic plants (e.g. astragalus)
- active phyto-complexes (echinacea, rosehip)
- highly bioavailable nutrients
- microalgae such as spirulina



A SYNERGY THAT HELPS TO:

- support the immune system
- modulate the inflammatory response
- improve the ability to adapt to stress

WHEN IT IS PARTICULARLY IMPORTANT

MULTIADAPT® is essential for subjects whose metabolism is working above normal levels:

- growing puppies
- active or sporting dogs
- pregnancy and lactation
- debilitated or recovering subjects
- convalescence periods

In these conditions, the body's demands increase, and diet alone is often not sufficient.

THE IMMUNE SYSTEM HAS ITS FOUNDATION IN THE GUT AND WORKS IN CONNECTION WITH METABOLISM.

For this reason, support is even more effective when combined with:

LACTOADAPT®

→ GUT MICROBIOTA BALANCE



DOGO OMEGA PLUS®

→ METABOLIC SUPPORT AND MODULATION OF THE INFLAMMATORY RESPONSE



It's not about "adding vitamins."

IT'S ABOUT SUPPORTING THE BODY'S ABILITY TO ADAPT, RESPOND, AND MAINTAIN BALANCE.

DON'T STIMULATE  
BALANCE

SYNERGISTIC USE



PREPARATION MAKES THE DIFFERENCE

Proper preparation is one of the most important factors for achieving optimal reproductive results.

Early intervention allows you to support the body during the phases leading up to mating.

A FUNCTIONAL APPROACH TO REPRODUCTION

+ Reproductive function is closely linked to the overall condition of the body.

+ Even seemingly healthy animals can benefit from targeted support.

A positioning that distinguishes it from standard supplements.

FERTIADAPT®

Dietetic complementary feed (PARNUT) for dogs and cats, formulated to support reproductive function in both males and females.



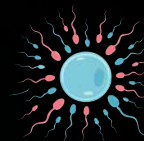
CURCUMA, MELONA



IN MALES

Spermatogenesis is a time-dependent process (≈ 60 days).

For this reason, early intervention is essential.



RECOMMENDED USE:

- 2-3 months before mating
- preparation for chilled or frozen semen
- also useful in normofertile subjects

SUPPORTS:

- + semen quality
- + vitality and functionality





## IN FEMALES

Proper use does not begin with heat. The most common mistake is intervening too late.

### RECOMMENDED USE:

- from one heat cycle to the next
- at least 3–4 months before mating

### AFTER MATING:

Continue until pregnancy is confirmed

### AFTER PREGNANCY CONFIRMATION

In the second month of gestation, when metabolic demand increases:

## SYNERGISTIC USE

### MULTIADAPT®

→ METABOLIC SUPPORT AND ADAPTIVE CAPACITY



### DOGO OMEGA PLUS®

→ SUPPLY OF EPA AND DHA  
 → SUPPORTS DEVELOPMENT AND PHYSIOLOGICAL BALANCE



This is the phase when fetal growth is most intense and the mother's body is under greater demand.

### FERTILITY MANAGEMENT IS BUILT OVER TIME:

- preparation
- support
- guidance

### WHY THIS APPROACH MAKES A DIFFERENCE

- improves reproductive quality
- supports the body during demanding phases
- enables more informed reproductive management

PROPER PREPARATION MAKES THE DIFFERENCE.

## NATURAL SUPPORT FOR REBALANCING

Pseudopregnancy is a condition that can occur in unspayed female dogs and cats after the heat cycle.

It may be accompanied by:

- milk production
- restlessness
- maternal behaviors
- alterations in physiological balance

A delicate phase that requires appropriate support.

---

INTERVENING DOES NOT MEAN SIMPLY STOPPING THE SYMPTOM. IT MEANS GUIDING THE BODY TOWARD A GRADUAL RETURN TO BALANCE.

---

## ANTILACT PET ®

Complementary feed for dogs and cats, formulated to support the body in cases of pseudopregnancy and end of lactation, promoting the physiological restoration of the mammary gland.



CYNARA SCOLYMUS, SALVIA OFFICINALIS

---

A PRACTICAL AND NATURAL SOLUTION FOR MANAGING THESE CONDITIONS. NOT JUST MANAGING THE SYMPTOM. BUT REBALANCING THE BODY.

---

### WHAT MAKES IT UNIQUE

A formulation based on selected natural ingredients that act synergistically:

- support for physiological rebalancing
- management of milk production
- gradual and well-tolerated action

### WHY CHOOSE IT

- useful in cases of pseudopregnancy
- support at the end of lactation
- promotes physiological restoration of the mammary gland
- well tolerated
- suitable for repeated use over time



FROM BIRTH TO HANDOVER: THE DOGOTEKA METHOD

The phase from birth to weaning is one of the most delicate in a puppy's life.

This is when the following are built:

- development
- immune system
- intestinal balance

And the mother is supported during one of her most demanding periods.

DOGOTEKA SUPPORTS BREEDERS, MOTHERS, AND PUPPIES AT EVERY STAGE, WITH A PROGRESSIVE AND SYNERGISTIC APPROACH.

PHASE 1 – BIRTH

CELERVIS PET®

SUPPORT FOR THE MOTHER

→ energy support and adaptation to the stress of labor

SUPPORT FOR THE PUPPIES

For weaker puppies or those struggling to start:

- energy support in the very first stages
- helps initiate and support adaptation to life



DOGOREHYDRO®

- replenishment of fluids and electrolytes
- during labor and in the hours that follow



In the final days of pregnancy and during delivery, the female's body undergoes intense stress.



ENERGY SUPPORT IN THE VERY FIRST STAGES HELPS INITIATE AND SUPPORT ADAPTATION TO LIFE

## POST-BIRTH &amp; LACTATION

## SUPPORT FOR THE MOTHER

After delivery and during lactation, metabolic demand increases significantly.

CELERVIS PET®

→ support in the first days post-partum

DOGOREHYDRO®

→ metabolic and hydration support during lactation

MULTIADAPT®

→ metabolic and hydration support during lactation



A phase with high fluid and nutrient loss.

## SUPPORT FOR THE PUPPIES

DOGO NUTRI MILK®

- nutritional support when maternal milk is insufficient
- also useful in the early weaning stages



Formulated with whey, vitamins, and trace elements, it supports nutritional needs in early growth stages. Mixed with goat milk, it creates an easily digestible liquid preparation, useful when milk supplementation is needed and during weaning.

LACTO PUPPY PASTA®

→ support for microbiota and immune defenses

Particularly useful in cases of:

- weak puppies
- growth difficulties
- intestinal imbalances
- dietary changes (milk supplementation, weaning)



**FASE 3 – WEANING & PREPARATION FOR HANDOVER**

**PREPARING THE PUPPY FOR A NEW LIFE**

This phase is essential to stabilize the gut, immune defenses, and development.

**LACTO PUPPY PASTA®**



→ intestinal and immune support

Particularly useful:

- before vaccinations
- during dietary changes
- during transition to a new home

**LACTO ADAPT®**



A balanced immune system responds more effectively to vaccination stimuli, supporting a more complete response.

**DOGO JUNIOR®**

→ support for bone and joint development



**MULTI ADAPT®**

→ metabolic, immune, and adaptive support



**DOGO OMEGA PLUS®**

→ comprehensive nutritional and metabolic support



EACH PHASE HAS DIFFERENT NEEDS. FOR THIS REASON, SUPPORT EVOLVES OVER TIME:

1. BIRTH    2. LACTATION    3. WEANING    4. PREPARATION FOR A NEW LIFE

**WHY THIS APPROACH MAKES A DIFFERENCE**

- supports the mother during the most demanding phases
- helps puppies in their earliest stages of life
- promotes more balanced development
- prepares the puppy for transition to a new family

**GROWING WELL  
STARTS LONG BEFORE  
HANDOVER.**

THE SKIN IS THE LARGEST ORGAN IN THE BODY.

Itching, dermatitis, hair loss. They don't start on the surface.

They are often the result of an internal imbalance involving the gut, immune system, and inflammation.

A common mistake. Treating only the symptom.

+ But the skin is the final link.

+ The issue starts earlier.



CORTIADAPT®

THE TURNING POINT

Dietetic complementary feed (PARNUT) for the support of dermal function.

NOT JUST A SUPPLEMENT. A FUNCTIONAL APPROACH.

WHY IT'S DIFFERENT

It doesn't simply provide nutrients. It works on the body's response. Thanks to a targeted phytotherapeutic blend:

Ribes nigrum

- modulation of allergic reactions
- natural antihistamine action

Viola tricolor

- direct support for the epidermis

Nigella sativa

- immune support

A broader, deeper, more complete action.



RIBES NIGRUM, NIGELLA SATIVA



WHEN IT'S REALLY NEEDED

- persistent itching
- dermatitis
- allergies
- skin microbiota imbalances (e.g. Malassezia)
- hair loss

When the skin keeps "bringing the problem back."

A BROADER, DEEPER, MORE COMPLETE ACTION.

# CORTIADAPT GEL®

## LOCAL INTERVENTION

For the most critical areas:

- redness
- irritation
- localized lesions

Targeted action, where it's needed

- + One product can help
- + But it's not enough



THE DIFFERENCE IS SYNERGY BECAUSE THE SKIN IS NOT AN ISOLATED SYSTEM.

SYNERGISTIC USE

START FROM THE GUT

## LACTOADAPT®

- microbiota rebalancing
- this is where immune response is regulated



SYSTEMIC MODULATION

## MULTIADAPT®

- adaptogenic support
- helps the body avoid excessive reactions



MAINTAIN OVER TIME

## DOGO OMEGA PLUS®

- supports dermal function
- supports cell membranes
- ideal once the acute phase is under control



ACUTE VS MAINTENANCE

CORTIADAPT®

→ when the problem is active



DOGO OMEGA PLUS®

→ for long-term management and maintenance



WHY THIS APPROACH MAKES THE DIFFERENCE

- acts on the causes, not just the symptoms
- works across multiple systems simultaneously
- enables more complete and long-lasting management

DOGOTEKA SKIN

DON'T TREAT JUST THE SKIN. REBALANCE THE SYSTEM.

AFTER



AFTER

BEFORE



BEFORE

## DOGGO OMEGA PLUS®

NOT JUST AN OIL. AN ADVANCED FORMULA.

When it comes to Omega-3s, thinking that one oil is the same as another is the most common mistake.

- + Not all Omega-3s are equal
- + And above all, not all formulations are



BEYOND THE CONCEPT OF "SALMON OIL"

Many products on the market rely on a single lipid source.

This means:

- limited nutritional profile
- variable EPA and DHA content
- less control over quality over time

A more advanced approach is not based on a single oil, but on a carefully designed combination of multiple sources.

A MORE COMPREHENSIVE FORMULATION APPROACH

DOGGO OMEGA PLUS® WAS DEVELOPED TO GO BEYOND THIS LOGIC.

It does not rely on a single source, but on a synergy of selected oils with specific and complementary roles.

### A COMPLETE AND ADVANCED FORMULA

DOGGO OMEGA PLUS® combines multiple sources of fatty acids:

#### Active Omega-3 sources

- standardized fish oil
- krill oil → *high bioavailability*
- algae oil (Schizochytrium) → *natural source of DHA*

EPA and DHA already active and ready for use

EPA 18%

DHA 12%



## FUNCTIONAL PLANT OILS

- camelina
- flaxseed
- safflower
- corn germ
- rapeseed and sunflower

These are not included to “add volume” but to:

- stabilize the formulation
- protect fatty acids
- complete the nutritional profile



*Algae oil (Schizochytrium)*

## STABILITY: THE REAL HIDDEN VALUE

Omega-3's are extremely sensitive to oxidation.

This is where many products lose quality.

## DOGO OMEGA PLUS®

DOGO OMEGA PLUS® is designed to protect the formula:

- ✓ vitamin E (tocopherols)
- ✓ natural rosemary extracts
- ✓ ascorbyl palmitate

*a complete antioxidant system*

- ✓ Lecithins

→ improve dispersion and bioavailability

RESULT:

- greater stability
- lower risk of rancidity
- consistent quality over time



EPA e DHA: the key point

Many plant oils provide ALA, but in dogs and cats, conversion is limited.

DOG OMEGA PLUS® directly provides:

- ✓ EPA
- ✓ DHA

already bioavailable  
already active

IT'S NOT THE QUANTITY OF A SINGLE NUTRIENT THAT  
MAKES THE DIFFERENCE. IT'S THE OVERALL BALANCE.

WHY BALANCE MATTERS

A proper intake of Omega-3, 6, and 9 allows:

- a more balanced inflammatory response
- support for skin and coat
- joint support
- immune system support

DOG OMEGA PLUS®

→ daily nutritional foundation

MULTIADAPT®

→ during periods of increased metabolic demand:

- growth
- sport
- stress
- pregnancy
- recovery

NOT JUST AN OIL.

BUT FUNCTIONAL DAILY NUTRITION.

THE DIFFERENCE IS NOT ADDING SOMETHING.

IT'S DOING IT THE RIGHT WAY, EVERY DAY.



## WHEN URINATION CHANGES, IT'S NEVER A MINOR DETAIL.

If your dog or cat:

- urinates more frequently
- has small leaks
- seems uncomfortable
- shows behavioral changes

+ it's not just a practical inconvenience

+ it's a signal to pay attention to

Urinary wellbeing directly affects:

- the animal's quality of life
- daily management
- harmony at home




---

TWO DIFFERENT PROBLEMS. TWO PRECISE SOLUTIONS.

---

## INCOPET DRY®

### WHEN THE ISSUE IS HOW THEY URINATE

Liquid complementary feed for dogs and cats, formulated to support physiological control of urination.

When to use it

- increased urinary frequency
- reduced control
- post-urination dribbling
- occasional small leaks

Common situations, especially:  
**IN MATURE ANIMALS**  
**IN SPAYED FEMALES**



QUERCUS PEDUNCULATA, TILIA  
TOMENTOSA

- SUPPORTS THE PHYSIOLOGICAL TONE OF THE URINARY TRACT
- HELPS IMPROVE URINARY CONTROL
- CONTRIBUTES TO DAILY MANAGEMENT
- A PRACTICAL SOLUTION WHEN THE ISSUE IS HOW THEY URINATE

# URIPET CARE®

WHEN THE ISSUE IS HOW THEY FEEL

Liquid complementary feed for dogs and cats, designed to support the lower urinary tract.

When to use it

- urinary sensitivity
- delicate phases of the lower urinary tract
- discomfort during urination



1. SUPPORTS THE PHYSIOLOGICAL BALANCE OF THE URINARY TRACT
2. CONTRIBUTES TO URINARY COMFORT
3. HELPS MAINTAIN A BALANCED URINARY ENVIRONMENT
4. WHEN THE ISSUE IS HOW THEY EXPERIENCE IT

DISTINGUISHING MAKES THE DIFFERENCE

Not all urinary issues are the same.

Confusing them leads to ineffective solutions.

## INCO PET DRY®

→ URINARY CONTROL

## URI PET CARE®

→ COMFORT AND URINARY WELLBEING

They can also be used in synergy, when needed.

Why this approach works

- targeted
- easy to apply
- responds to real needs

THE ISSUE IS NOT JUST URINATION.  
IT'S HOW IT HAPPENS—AND HOW IT FEELS.



## THE MOUTH IS THE STARTING POINT.

Plaque, tartar, bad breath. These are not just cosmetic issues.

THEY ARE SIGNS OF A BACTERIAL IMBALANCE

Poor oral hygiene can lead to:

- gingivitis
- periodontitis
- pain during chewing
- systemic bacterial spread



## A COMMON MISTAKE

Acting only when the problem is visible. When tartar appears, the process is already underway.

DOGOTEKA DOUBLE ACTION

## DOGODENT® GEL

### DIRECT CLEANING AND LOCAL ACTION

Oral gel for dogs and cats for daily oral hygiene.

- HELPS REMOVE PLAQUE AND DEBRIS
- SOOTHES GUMS
- IMPROVES BREATH

### HOW IT WORKS

- bicarbonate and activated charcoal → cleansing action
- enzymatic action (bromelain) → supports debris breakdown
- plant extracts → soothing and refreshing effect
- zinc → supports bacterial control

Clean + control over time



CHAMOMILLA RECUTITA, THYMUS VULGARIS

CLEANING + PROTECTION IN A SINGLE STEP

# DOGODENT®

## CONTROL FROM WITHIN

Complementary feed in powder form for long-term oral hygiene support.

- HELPS COUNTERACT PLAQUE AND TARTAR
- IMPROVES BREATH
- SUPPORTS GUMS

### HOW IT WORKS

- **lactoferrin** → antimicrobial support
- **algae** → action on biofilm and tartar buildup



works continuously, every day

ACTING ON TWO LEVELS

### DOGODENT® GEL

→ direct and local action

Together they enable more complete management.

### DOGODENT®

→ continuous support over time



### WHY THIS APPROACH WORKS

- intervenes before the problem worsens
- acts on the cause (bacterial biofilm)
- easy to maintain daily

A HEALTHY MOUTH IS BUILT EVERY DAY.

## WHEN BALANCE CHANGES

Restlessness, agitation, difficulty relaxing.

These are signals that often appear in response to stressful situations:

- environmental changes
- travel
- sudden noises
- separation

---

STRESS IS PART OF LIFE FOR DOGS AND CATS. BUT WHEN IT BECOMES FREQUENT, IT NEEDS TO BE MANAGED

---

It's not always about "switching off" behavior:

- + the goal is not to suppress
- + but to help the body regain balance

## DOGORELAX®

Complementary feed for dogs and cats designed to support during periods of stress and agitation.

- 
- PROMOTES RELAXATION
  - SUPPORTS EMOTIONAL BALANCE
  - HELPS MANAGE STRESSFUL SITUATIONS
  - WITHOUT REDUCING VITALITY AND RESPONSIVENESS
- 



VALERIANA, TILIA TOMENTOSA



### WHEN TO USE IT

- changes (home, routine, family)
- travel
- thunderstorms, fireworks
- separation
- new situations

BOTH OCCASIONALLY

---

AND DURING MORE DELICATE PERIODS

## BALANCE, NOT JUST INTERVENTION

**DOGORELAX®**

→ direct support during stressful moments

**LACTOADAPT®**

→ support for intestinal balance



## SYNERGISTIC USE

A significant portion of mediators such as serotonin is produced at the gut level.

For this reason, in more sensitive subjects, working on the gut can also help.

## WHY THIS APPROACH WORKS

- does not act only on behavior
- supports the organism as a whole
- allows for more stable long-term management

IT'S NOT ABOUT CALMING.  
IT'S ABOUT REBALANCING.



## WHEN DRINKING IS NOT ENOUGH

Drinking water is essential.

But in many situations, it is not sufficient to maintain proper physiological balance.

When fluids are lost, it's not just water that is lost... but also essential electrolytes.

Electrolytes (sodium, potassium, calcium) are essential for:

- fluid balance
- muscle function
- nervous system
- recovery after exertion or stress



WHEN THEY ARE IMBALANCED, THE BODY STRUGGLES TO FUNCTION PROPERLY

## DOGO REHYDRO®

## Rehydration &amp; recovery

Complementary feed for dogs and cats formulated to restore normal electrolyte levels and support fluid balance.

## WHEN TO USE IT

Useful in all situations where the animal may lose fluids or fail to rehydrate properly:

- intense heat
- vomiting and diarrhea
- prolonged panting
- physical activity or sport
- urinary losses
- convalescence and recovery

- helps replenish lost electrolytes
- supports more effective rehydration than water alone
- contributes to restoring physiological balance



WHEN DRINKING IS NOT ENOUGH, YOU NEED TO REPLACE WHAT HAS BEEN LOST.

BECAUSE HYDRATION IS NOT JUST ABOUT DRINKING. IT'S ABOUT RESTORING BALANCE

## WHEN THE EYES NEED ATTENTION

Tearing, discharge, redness.

Common signs that may be caused by dust, wind, or individual sensitivity.

## DOGO DROPS ®

Ophthalmic solution for dogs and cats for daily eye care and hygiene

### WHAT IT DOES

- gently cleanses
- helps remove impurities and discharge
- provides relief in case of irritation

### WHEN TO USE IT

- excessive tearing
- ocular discharge
- redness
- daily cleaning



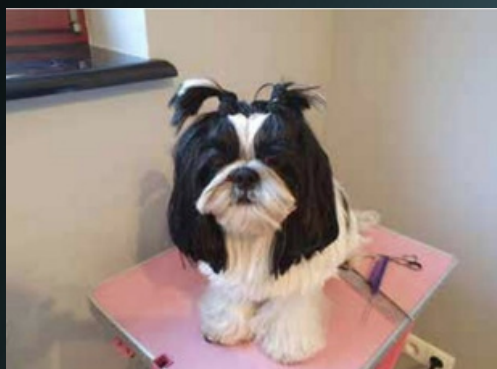
CHAMOMILLA, CALENDULA

**DAILY CARE MAKES  
THE DIFFERENCE.**

BEFORE



AFTER



## PROTECT OUTSIDE TO FEEL GOOD INSIDE

Skin, paws, and coat are exposed every day to external factors that can disrupt their balance.

That's why targeted daily protection is essential.

### DOGOMILK®

- gentle cleansing shampoo
- cleans without damaging skin and coat



### DOGOSTOP SPRAY®

- natural protection against unwanted insects
- ideal during high-risk periods
- also useful alongside traditional protection



### SOFT PAD BUTTER®

- nourishing and protective balm
- indicated for:

- paw pads
- pressure calluses
- dry and cracked skin



BEFORE

AFTER



CLEANSE, PROTECT, REPAIR.  
EVERY ACTION HAS ITS ROLE.



## METHOD DOGOTEKA

GROWTH & DEVELOPMENT

[DOGO JUIOR](#)
[MULTIADAPT](#)
[LACTOADAPT](#)
[DOGODIGESTIVE](#)
[DOGOOMEGA PLUS](#)

JOINTS & MOBILITY

[DOGOMINI](#)
[DOGOMAXY](#)

PAIN MANAGEMENT

[DOGO DOL](#)

SENIOR ANIMALS

[DOGO SENIOR](#)
[MULTIADAPT](#)
[LACTOADAPT](#)
[DOGOMAXY](#)
[DOGOOMEGA PLUS](#)

INTESTINAL BALANCE

[LACTOADAPT](#)
[DOGODIGESTIVE](#)
[LACTOADAPT STOP](#)

INTESTINAL INFECTIONS

[DIAGIAR](#)
[LACTOADAPT](#)
[MULTIADAPT](#)

ENERGY, SPORT & RECOVERY

[CELERVIS PET](#)
[MULTIADAPT](#)
[DOGO REHYDRO](#)
[DOGOOMEGA PLUS](#)

IMMUNE SYSTEM

[MULTIADAPT](#)
[LACTOADAPT](#)
[DOGOOMEGA PLUS](#)

FERTILITY & REPRODUCTION

[FERTIADAPT](#)
[MULTIADAPT](#)
[DOGOOMEGA PLUS](#)

PSEUDOPREGNANCY

[ANTILACT](#)

BREEDING & EARLY MONTHS

[CELERVIS PET](#)
[DOGO REHYDRO](#)
[MULTIADAPT](#)
[LACTOADAPT PUPPY](#)
[DOGO NUTRI MILK](#)

SKIN & COAT

[CORTIADAPT](#)
[CORTIADAPT GEL](#)
[MULTIADAPT](#)
[LACTOADAPT](#)
[DOGOOMEGA PLUS](#)

DAILY FUNCTIONAL NUTRITION

[DOGOOMEGA PLUS](#)
[MULTIADAPT](#)

URINARY TRACT

[URIPET CARE](#)
[INCO PET DRY](#)

ORAL HYGIENE

[DOGODENT](#)
[DOGODENT GEL](#)

ANXIETY & STRESS

[DOGO RELAX](#)
[LACTOADAPT](#)

HYDRATION & FLUID BALANCE

[DOGO REHYDRO](#)

EYE WELLBEING

[DOGO DROPS](#)

EXTERNAL PROTECTION & CARE

[DOGOMILK](#)
[DOGOSTOP SPRAY](#)
[SOFT PAD BUTTER](#)

# DOGOTEKA

UNLEASH the Paw-sibilities

## A DIFFERENT APPROACH

There is no single product for every problem.  
There is a body that functions as a whole.

## EVERY SYSTEM IS CONNECTED

Gut, skin, metabolism, immune system.

## THIS IS WHY DOGOTEKA WORKS THIS WAY

- + it does not act on a single symptom
- + it builds balance

## A METHOD, NOT A SINGLE SOLUTION

### EACH PRODUCT IS DESIGNED TO

- + work in synergy
- + support multiple systems
- + accompany the body over time

### WHY IT MAKES THE DIFFERENCE

- + enables more comprehensive management
- + improves the quality of response
- + builds more stable results

DOGOTEKA d.o.o.  
Golo Brdo 3A  
1215 Medvode  
Slovenia

[info@dogoteka.si](mailto:info@dogoteka.si)

[www.dogoteka.shop](http://www.dogoteka.shop)

00386 31 331 508



DOGOTEKA

IT'S NOT ABOUT ADDING. IT'S ABOUT CONNECTING EVERYTHING.